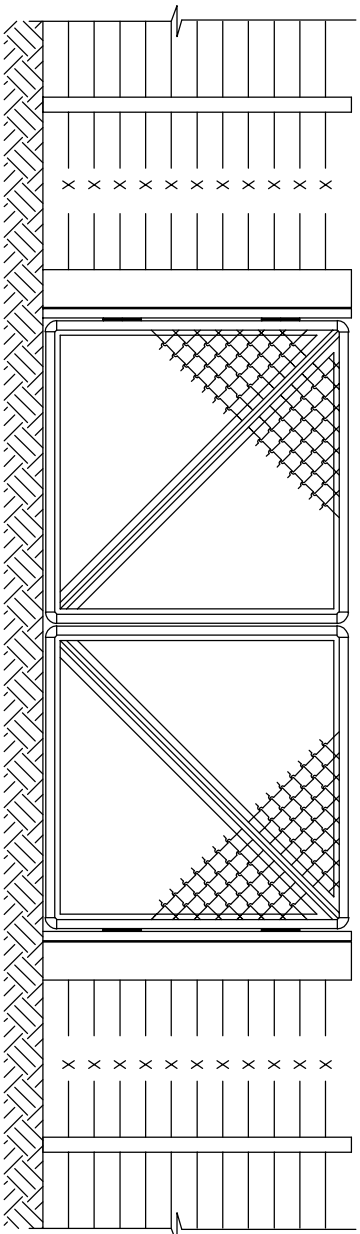
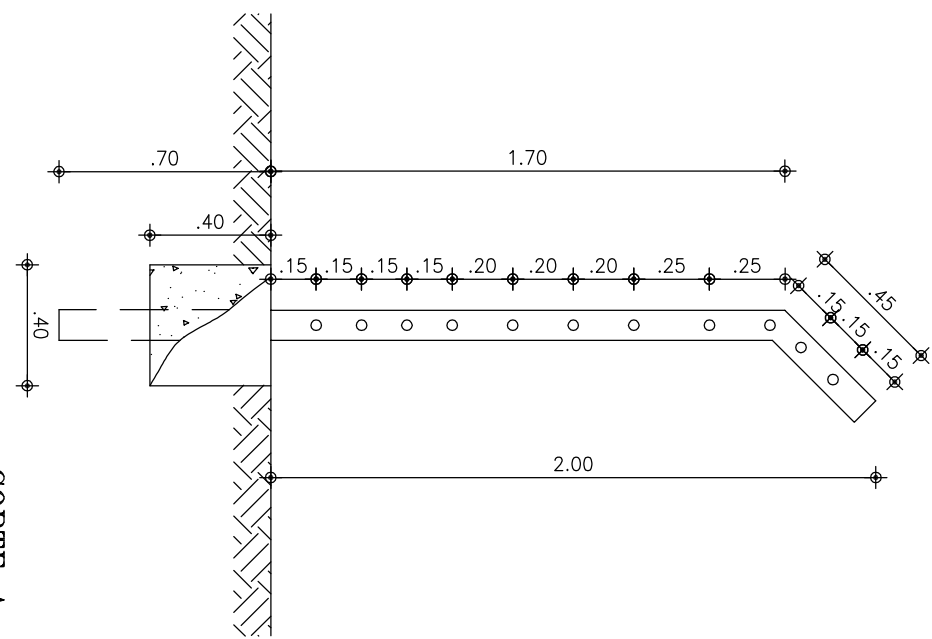
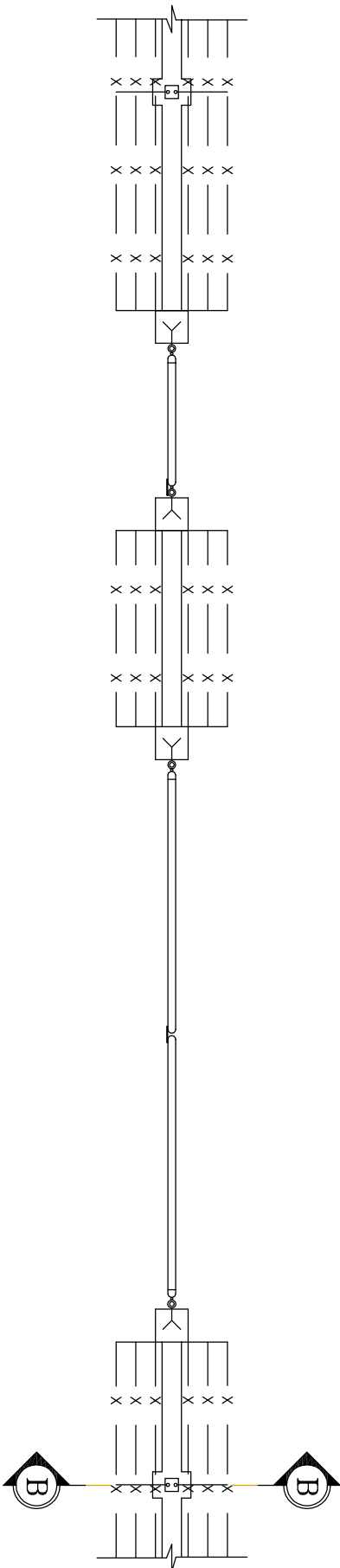


11 FIOS DE ARAME FARPADO

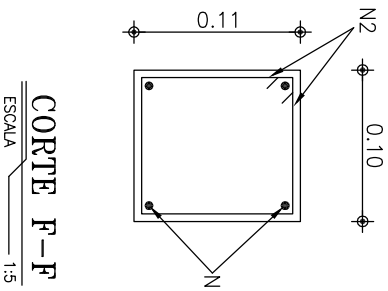
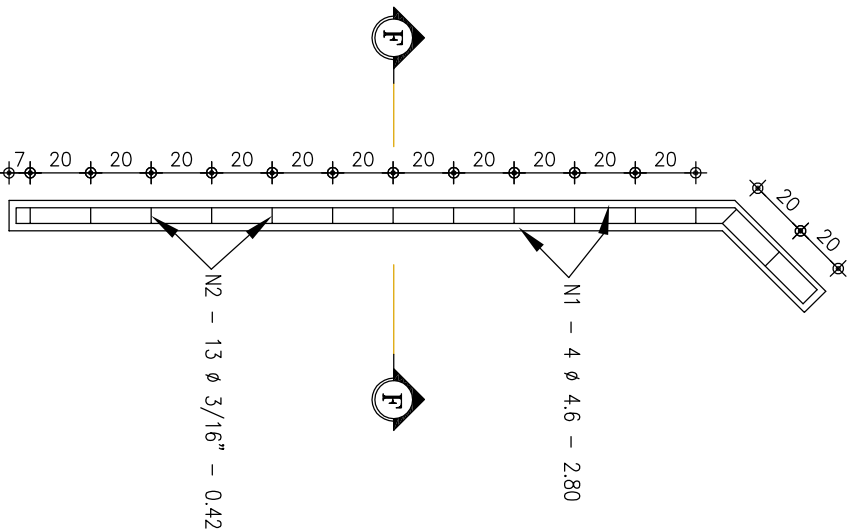


CERCA EM ARAME FARPADO
ESTAÇÃO PONTA VIRADA C/ 11 FIOS

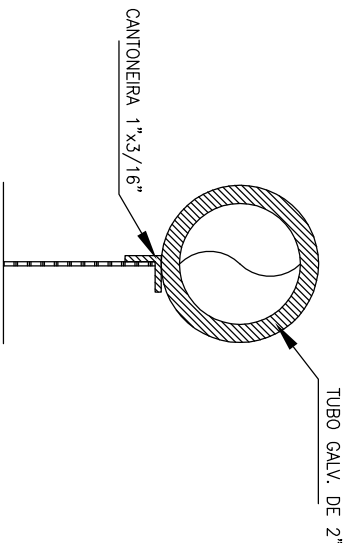


CORTE A-A

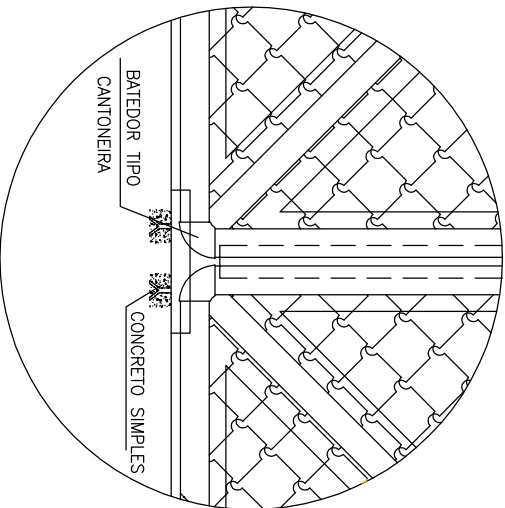
ARMADURA DO MOURÃO



CORTE F-F

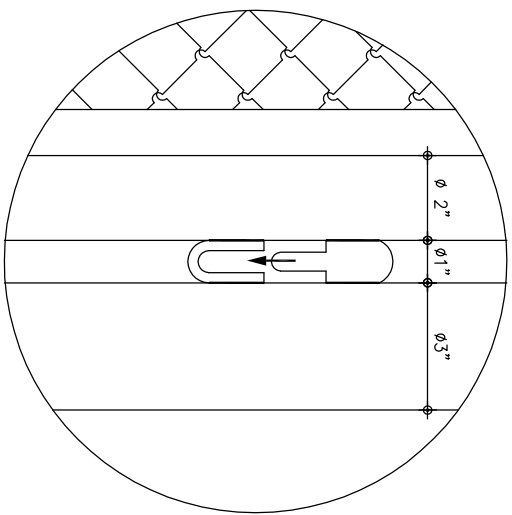


CORTE D-D

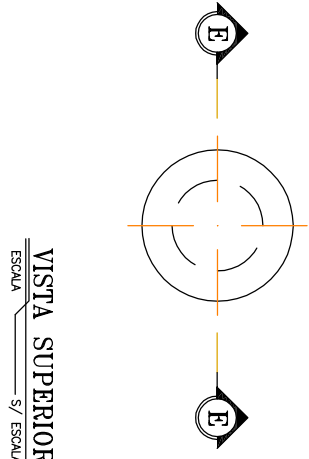


DETALHE 2

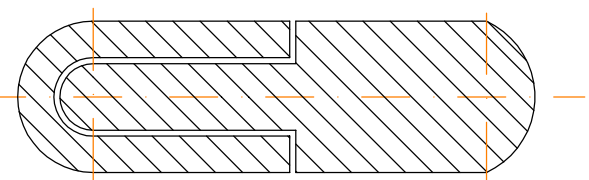
DETALHE DO PISO



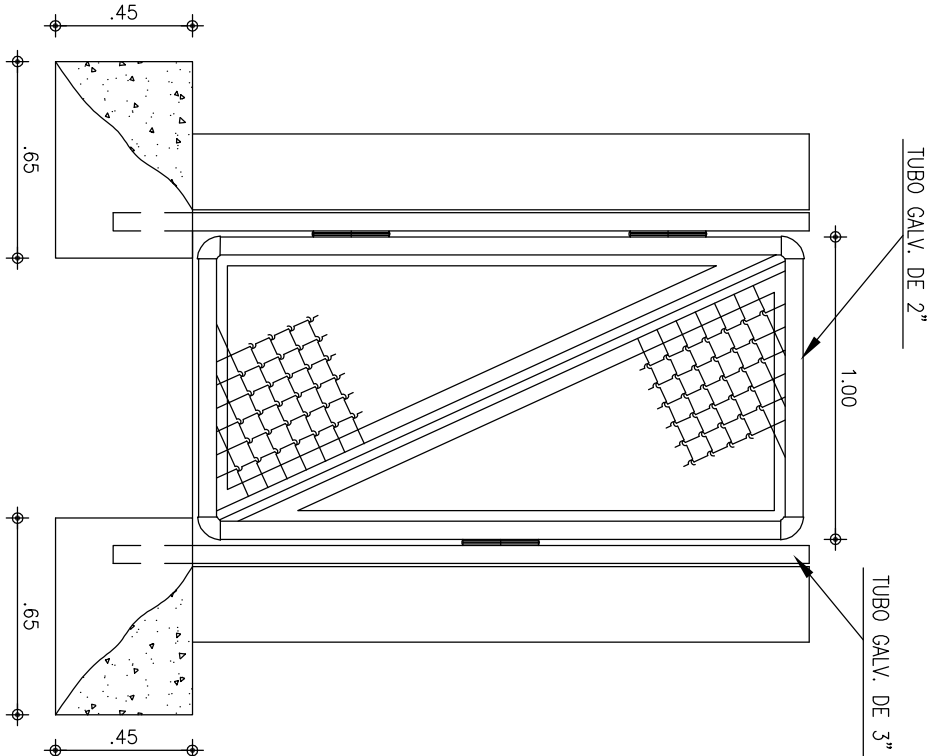
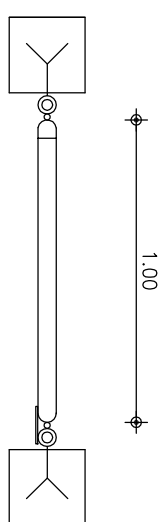
DETALHE 1



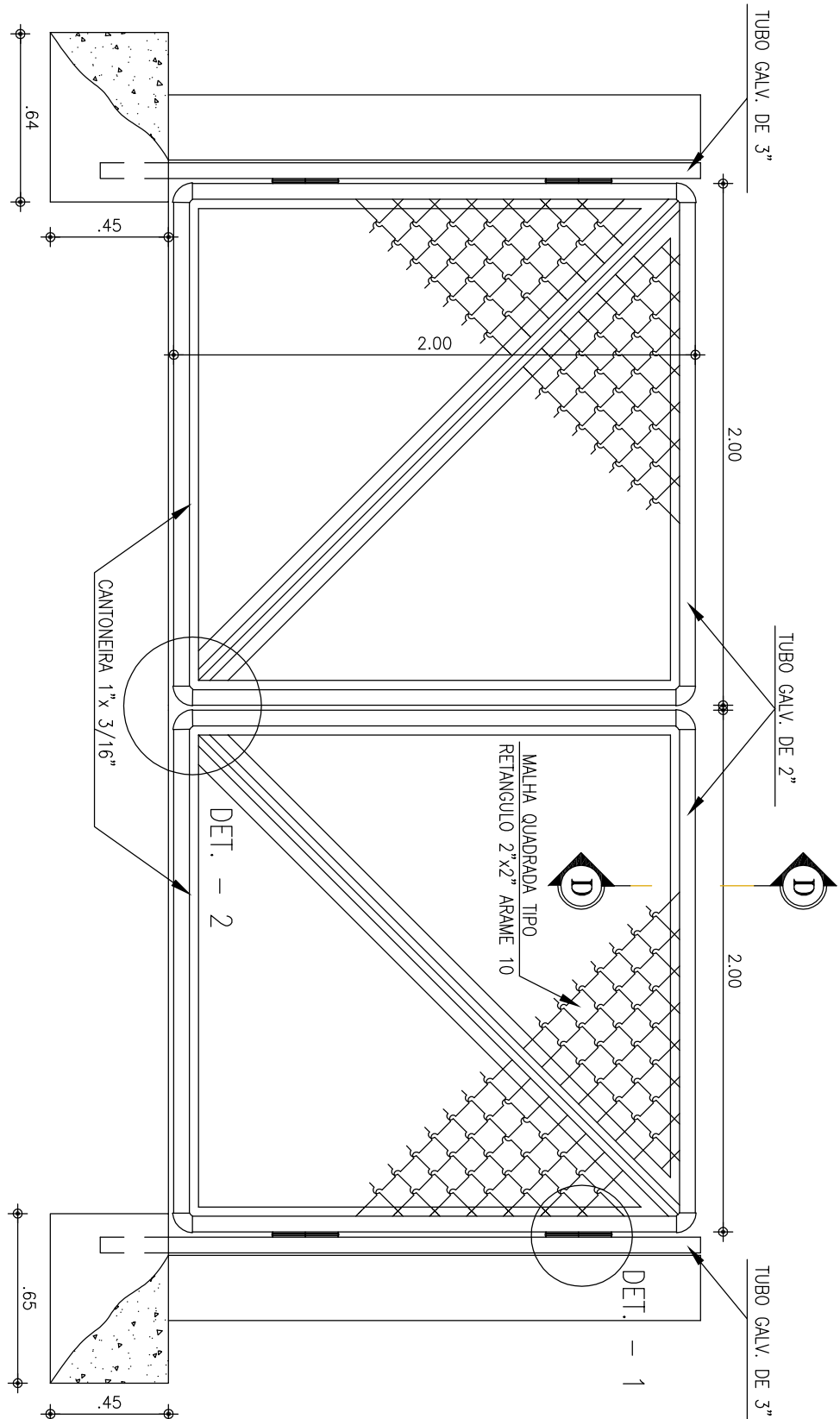
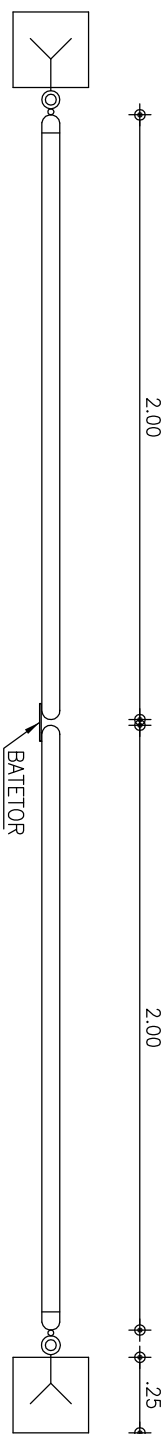
VISTA SUPERIOR



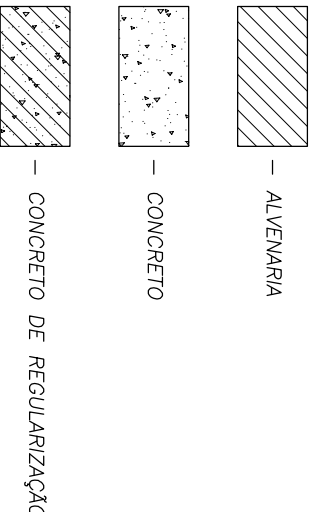
CORTE B-B



PORTÃO PEDESTRE



PORTÃO P/ VEÍCULOS



LEGENDA

NOTAS

ARTICULAÇÃO

REVISÕES		
Nº	NATUREZA DA REVISÃO	DATA
00		
01		
02		
03		
04		
05		

COMPANHIA DE DESENVOLVIMENTO DOS VALS DO SÃO FRANCISCO E DO PARANÁ - CODEVASF	
PROJETO BÁSICO DO SISTEMA DE ESGOTAMENTO	
SANITÁRIO DE UMBURANAS - BA	
DESENHO PADRÃO	
ESQUADRIAS E DETALHES	
ENR. JOSÉ CELSO A. OLIVEIRA, JR.	ABRIL/2009
ENR. MARCELO SILVA FERNANDES	ABRIL/2009
ENR.	ABRIL/2009